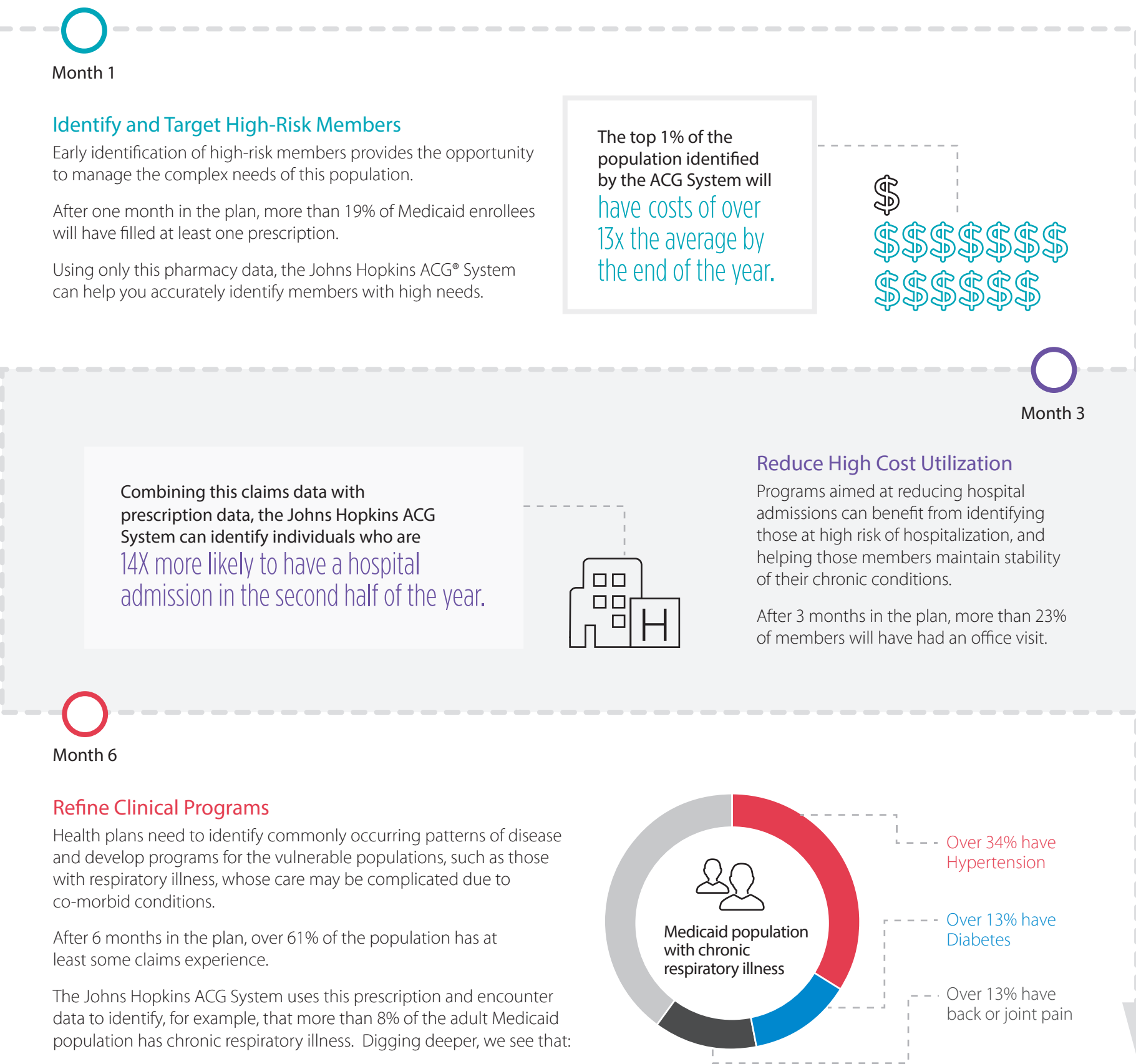


Financial Impact of COVID-19

New Medicaid Enrollees With the Highest Care Needs

Because of COVID-19, new unemployment claims are rising at record levels, which means a host of Americans will be looking for health insurance options. Many who have lost their employer-provided health insurance will turn to Medicaid, potentially flooding plans with members at high risk for developing severe illness if they contract the virus. Assessing health status for this influx of new people will be vital, as plans attempt to balance risk across their member population.



The Johns Hopkins ACG System is a Population Health Analytics toolkit which helps payers and providers understand and predict the health status and cost drivers for individual patients, subgroups, and whole populations.

To learn more about analyzing care needs for your Medicaid enrollees or to request a demo, [contact us](#).

IQVIA, formerly QuintilesIMS, One IMS Drive, Plymouth Meeting, PA 19462; Subset of the Legacy PharMetrics Adjudicated Claims Database containing a national cross-section of managed care plans; population of 1,028,287 Medicaid beneficiaries (age 0 to 64), 2014
<https://www.healthmanagement.com/wp-content/uploads/HMA-Estimates-of-COVID-Impact-on-Coverage-public-version-for-April-3-830-CT.pdf>